

RIB CostX[®] 7.1 Release Notes

Ever since CostX[®] started supporting native cloud storage for drawing files, more and more CostX[®] users are moving their drawing files to the cloud to reap the benefits of cloud services. In this release, we are pleased to announce that we have added native support for one more much coveted cloud storage provider – Microsoft SharePoint. This means you can now store your drawing files on SharePoint and access the drawings directly from within CostX[®].

In addition to adding support for SharePoint as a cloud storage provider, this release also includes several security features to further enhance the security of your data, two new tools for bulk importing and exporting CostX[®] projects, as well as a bunch of usability improvements and bug fixes for the take-off and reporting modules. Read on to find out more.

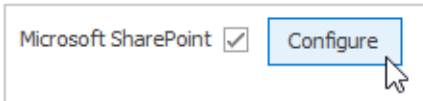
Headline Features

- **Native support for Microsoft SharePoint as a cloud storage provider**, allowing you to access drawing files stored on SharePoint directly from within CostX[®].
- Various **security features** to better protect your CostX[®] data, including:
 - Prompting administrators of the Network configuration of CostX[®] to review the password policy after upgrade if it is weaker than recommended.
 - New option for forcing users to change their password.
 - Encrypted connections between CostX[®] Clients and the CostX Server Auth and CostX Server Core services.
- New tools for **importing and exporting CostX[®] projects in bulk**.
- Support for RVT files from **Revit 2023**.
- Drawing Register information can now be displayed as columns on the Drawings List.
- Reports can now be organised in folders.
- It is now possible to create a new folder when copying a dimension group.
- Support for the “Building” property in IFC files.
- New functions added to CostX[®] Admin Portal - the user management interface for our subscription-based Cloud version of CostX[®] - including:
 - Ability to convert a User Admin to a Subscriber/User Admin.
 - Ability to view the list of currently logged-in users and end user sessions.
 - Ability to send a message from the Admin Portal to a CostX[®] user.

Adding Drawings from SharePoint

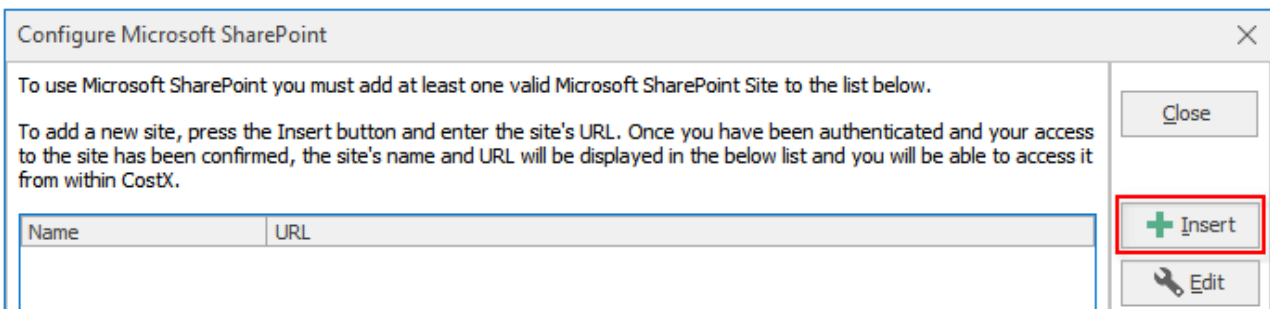
CostX® 7.1 includes native support for Microsoft SharePoint as a cloud storage provider, meaning you can now store your drawing files on SharePoint and access these drawings directly from within CostX®.

The drawing files that you want to use in CostX® must be stored in SharePoint document libraries. Before you can access the drawings, you must first specify which SharePoint sites you need to access and authenticate to the sites. This can be done by using the **Configure** button for SharePoint in the **Cloud** tab of **CostX® Options**.



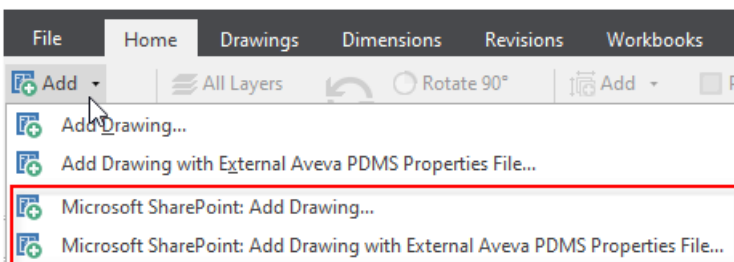
Clicking the **Configure** button brings up a configuration dialog in which you can use the **Insert** button to add the URL of the required site and complete the authentication process. When entering the URL, ensure that:

- It is a secure URL which starts with "https" rather than "http". Insecure http URLs are not allowed.
- A site URL is used (e.g., *https://abcgroup.sharepoint.com/teams/SampleProject*). Do not use a URL to a specific document library, such as *https://abcgroup.sharepoint.com/teams/SampleProject/Shared%20Documents/Forms/AllItems.aspx*.



It is possible to add more than one site. For example, you may have a separate SharePoint site for each project. By adding multiple sites, you can access the drawings for multiple projects from within CostX®.

After cloud storage support is enabled for SharePoint in **CostX® Options**, new menu items for SharePoint will be available in the **Add Drawing** menu, allowing you to add your SharePoint drawing files. When adding drawings from SharePoint, CostX® allows you to select the required drawing files from any document library on the sites that have been added to CostX®.



For more detailed information about configuring CostX® to use SharePoint drawing files, refer to the *Cloud Options* topic in CostX® Help.

Security Improvements

Data security is important for businesses today more than ever before. To keep CostX[®] safe for all our users, we constantly evaluate how to further enhance the security of your data. As part of our continuous efforts to strengthen the security of CostX[®], we have introduced several new security features in 7.1.

Encouraging Users to Improve Password Security

It is recommended that administrators of the Network configuration of CostX[®] implement a strong password policy to prevent compromised accounts and potential data breaches. When setting the password policy, we recommend:

- Using a password blacklist to prevent users from choosing commonly used passwords.
- Enforcing password complexity requirements which mandate that the password contains at least 12 characters including at least an upper-case letter, a lower-case letter, a digit, and a symbol (such as @\$%^&*!).

After upgrading to version 7.1, if your existing password policy is weaker than recommended, you'll be prompted (as shown below) to review the password policy the first time you log in to CostX[®] Server Admin.

NOTE: The prompt will not be displayed if a password policy that is stronger than what we recommend is already in place.

Fields in the prompt are pre-filled with our recommended values, and your current settings are displayed in the brackets to the right of each field for your reference. Please review the settings and update as necessary.

Password Policy

The CostX Server password policy is weaker than recommended. The recommended settings have been pre-filled below. Review the settings and click Update to apply the updated password policy settings.

Password Blacklist

Check Blacklist: (Currently Off)

Password Complexity

Enforce Complexity: (Currently Off)

Minimum Length: Characters (Currently 1)

Minimum Uppercase: Characters (Currently 0)

Minimum Lowercase: Characters (Currently 0)

Minimum Digits: Characters (Currently 0)

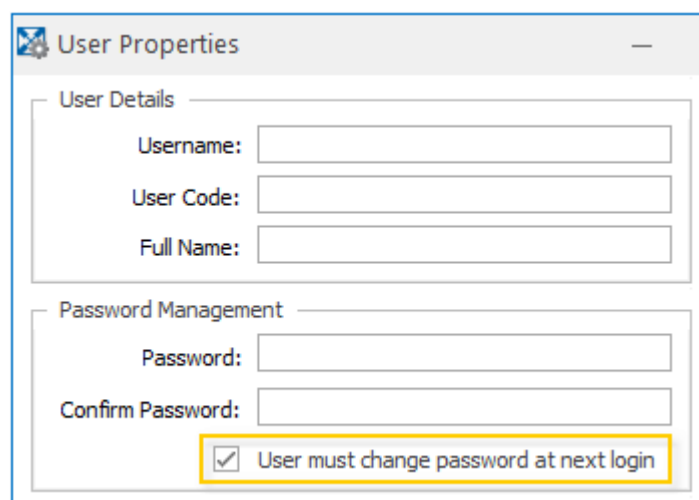
Minimum Symbols: Characters (Currently 0)

To use a password blacklist, you can use the **Change** button to import the list of prohibited passwords from a text file. Detailed instructions on how to create a password blacklist are provided in the *Password Policy* topic in CostX® Help. If a password blacklist was already defined in your previous version, the list will be maintained after the upgrade.

Once you are satisfied with the settings, click **Update** to apply the settings.

New Option to Force Password Change

In the **User Properties** dialog in CostX® Server Admin, there is now a new option for forcing a user to change their password. If this option is enabled, the user is prompted to change their password the next time they try to log in to CostX®. The user will not be allowed to log in until they change their password.



Encrypted Auth and Core Connections for CostX® Server

In the Network configuration of CostX®, database and server connections were already encrypted in previous versions. For additional security, the connections between CostX® Clients and the **CostX Server Auth** and **CostX Server Core** services are now also encrypted.

By default, the Auth and Core connections are encrypted using the self-signed TLS certificates that are automatically generated during the installation of CostX® Server. Instead of using the self-signed certificates, it is also possible to use a TLS certificate that is signed by a certificate authority (CA). If you wish to use a CA certificate to secure the Auth and Core connections, refer to the *Securing Auth and Core Connections with a CA Certificate* topic in CostX® Help.

Bulk Import and Export

The Network version of CostX® now allows you to bulk export and bulk import CostX® projects using two new tools: **BulkExportUtility** and **BulkImportUtility**. These two new tools are shipped with CostX® and can be found under the CostX® installation directory. The default paths of the tools are:

- Bulk import tool: C:\Program Files\Exactal\CostX\BulkImportUtility
- Bulk export tool: C:\Program Files\Exactal\CostX\BulkExportUtility

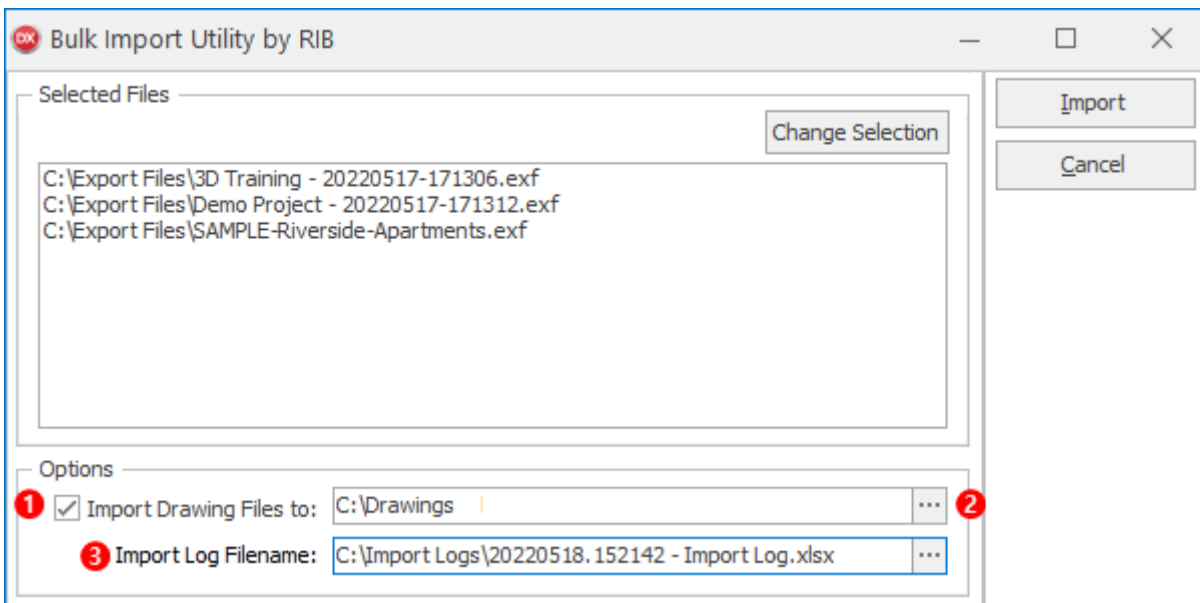
NOTE: If CostX® is installed to a different path than the default, the tools can be found under your chosen installation directory.

A CostX® license is not required to run the tools, but the person using the tools must be a CostX® System Administrator. To use the tools, simply double-click to start the required tool, and then enter your CostX® username and password to log in.

Bulk Import

When performing a bulk import, the EXF projects to be imported must not be protected with passwords or set to **Viewer Only**.

When configuring the import options, you can choose whether you want to import the drawing files in the selected EXF projects. To import drawing files, tick the **Import Drawing Files to** check box ❶ and specify the location that you want the drawings to be extracted to ❷. The drawings in each building revision will be extracted to the following path: <selected folder>\<project name>\<building name>\<revision number>. The sub-folders under the selected folder will be created automatically during the import.

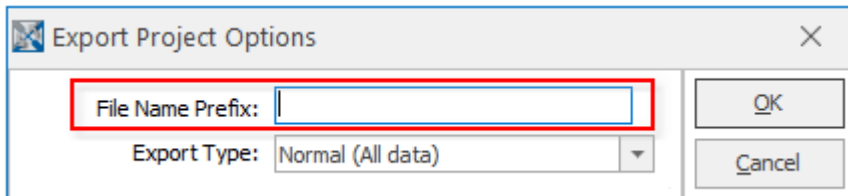


The import process will also automatically generate a log file which contains information about the import. The log file will be saved to the path specified in the **Import Log Filename** field ❸.

Bulk Export

When performing a bulk export, the person using the tool must have the **Allow Export** permission. A CostX® System Administrator who has the **Allow Export** permission can export any project, even if they are not included in the list of users with access to the project.

When configuring the export options, a **File Name Prefix** field is provided, allowing you to specify a prefix which will be prepended to the file name of each exported EXF file.



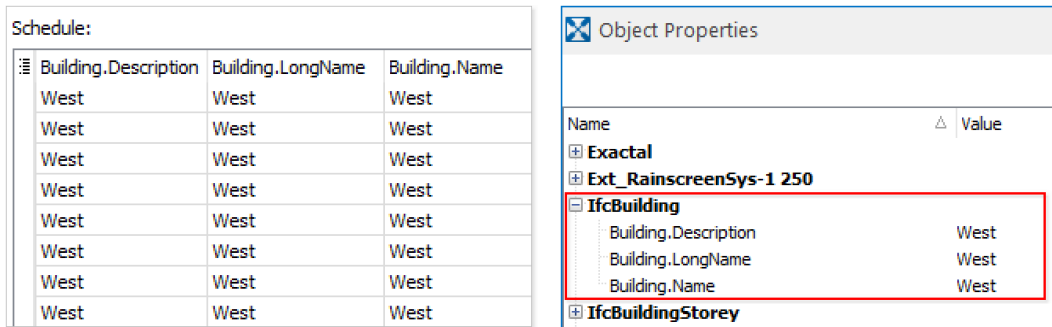
For more detailed information about how to use the bulk import and bulk export tools, refer to the following topics in CostX® Help:

- Importing Projects in Bulk
- Exporting Projects in Bulk

Drawings & Take-off

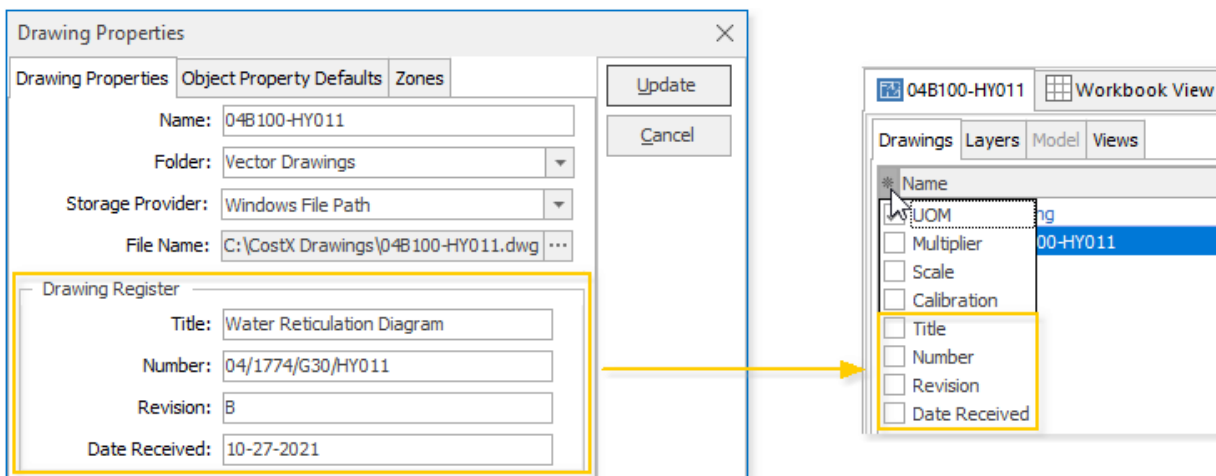
BIM

- Added support for RVT files from Revit 2023.
- Added support for the 'Building' property from an IFC file. The 'Building' property information is now available in the Schedule panel and in the 'IfcBuilding' category of **Object Properties**.



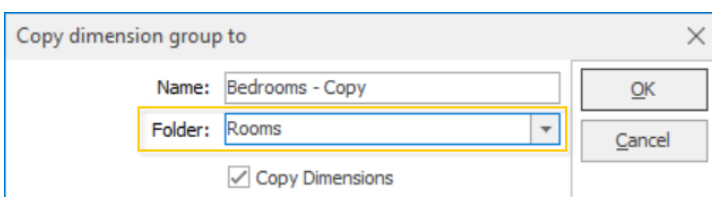
Displaying Drawing Register Information on the Drawings List

The **Drawing Register** information in **Drawing Properties** can now be displayed as columns on the Drawings List. Simply click the * button on the left of the headings bar in the Drawings List window to select the desired columns from the drop-down menu.



Ability to Create a New Folder When Copying a Dimension Group

Previously when copying a dimension group, the **Folder** field only allowed you to select a folder name from the list of existing folder names. It is now possible to type in a new name in the **Folder** field so that a new folder is also created for the copied dimension group when it is inserted into the dimension groups list.



Exporting Dimensions to Excel®

Export Dimensions to Excel has been updated to include the following changes to the **Summary** sheet of the Excel export:

- There is a new **Quantity** column that shows the Default Display quantity of each dimension group.
- The **UOM** column, which previously showed the UOMs for Measurement Type quantities, now shows the UOMs for Default Display quantities instead.
- The column that shows the Measurement Type of each dimension group has been renamed from **Type** to **Measurement Type**.

	A	B	C	D	E
1	Folder	Dimension Group	Quantity	UOM	Measurement Type
2	00 GFA	Feca	5,694	m2	Area
3	00 GFA	Uca	590	m2	Area
4	00 ROOMS	Balcony	595	m2	Area
5	00 ROOMS	Bathroom & Laundry	615	m2	Area
6	00 ROOMS	Bedroom	1,553	m2	Area
7	00 ROOMS	Corridors	332	m2	Area
8	00 ROOMS	Living, Kitchen & Entrance	2,091	m2	Area
9	00 ROOMS	Stores	22	m2	Area

Detailed Summary | **Summary** | (+)

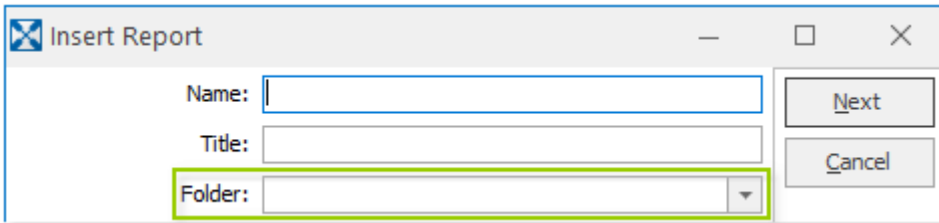
Resolved Issues

- Fixed an issue where when the legend was displayed on a drawing revision, dimension groups with accepted dimensions sometimes were shown in the legend even if the dimension groups were not selected.
- Fixed an issue where the take-off speed was slower when the dimension group filter above the dimension groups list was used.

Reports

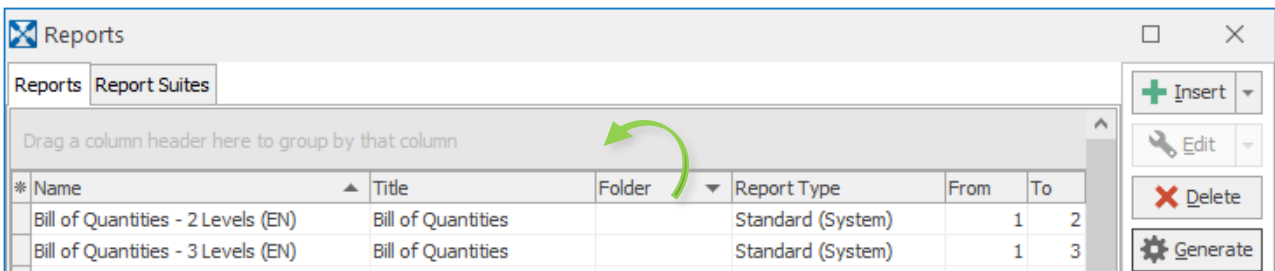
Ability to Organise Reports in Folders

Reports can now be grouped into folders. When inserting a report, there is now a new **Folder** field for specifying a folder for the report.



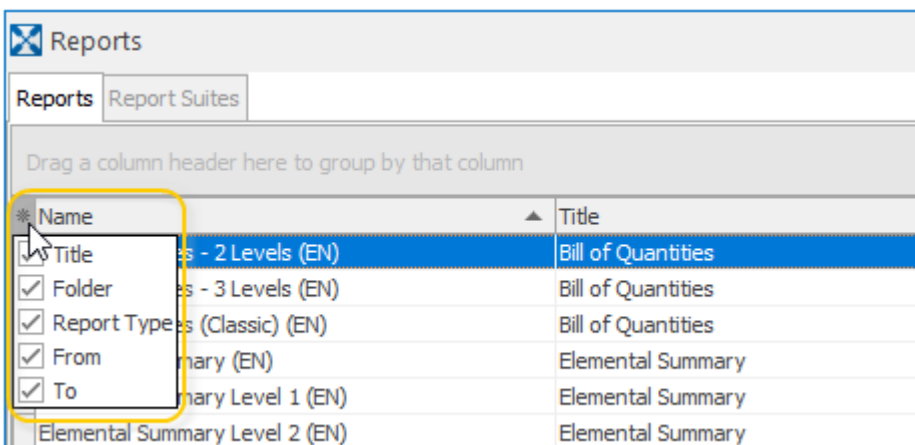
After a Standard report is added, you can change its folder at any time using the **Data** tab in **Report Properties**. To change the folder for an existing Custom report, you must copy the report and then specify the new folder in the **Insert Report** dialog.

The Reports List window shows the folder name of each report in a new **Folder** column, which can be dragged to the area immediately above the list (as shown below) to group the list by folder name. When the list is grouped by folder name, reports that do not have a folder specified are displayed under the folder <UNCLASSIFIED>.




New Option to Customise Columns Displayed in the Reports List

In the Reports List window, a new  (**Customise Columns**) button is available on the left of the column headings bar, allowing you to choose which columns you want to show or hide.



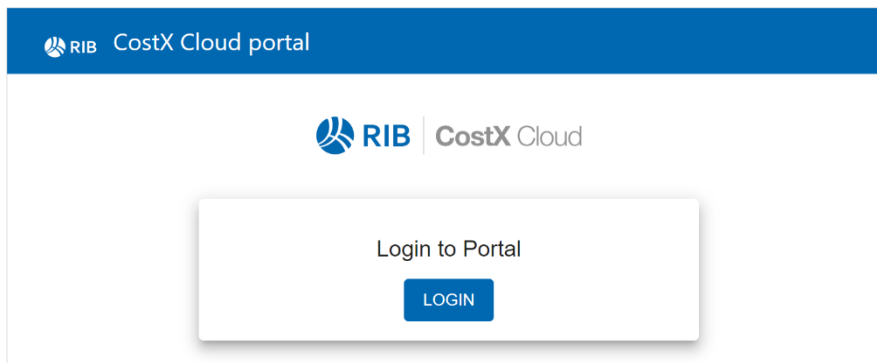
CostX® Cloud

To use CostX® in the cloud, you can either deploy it in a self-managed cloud environment; or alternatively, use our subscription-based Cloud version of CostX® which is hosted in Microsoft Azure and fully managed by RIB. With a subscription plan, you can always access the most up-to-date version of CostX®; and we take care of the hosting, administration, and upgrading of the software, allowing your IT department to free up resources to focus on more critical areas of their operations.

 **NOTE:** For more detailed information about the subscription-based CostX® Cloud, please contact our sales team.

The subscription-based CostX® Cloud provides all the take-off and estimating features that are available in the on-premises version, with the difference that CostX® users must be managed using our cloud-based CostX® Admin Portal (shown below) instead of CostX® Server Admin, and each user is assigned one of the following roles:


- **Subscriber** – a user who can access the CostX® application.
- **User Admin** – a user who can log in to CostX® Admin Portal to manage users but cannot access the CostX® application.
- **Subscriber/User Admin** – a user who can access both the CostX® application and CostX® Admin Portal.



What's New or Changed in Version 7.1?

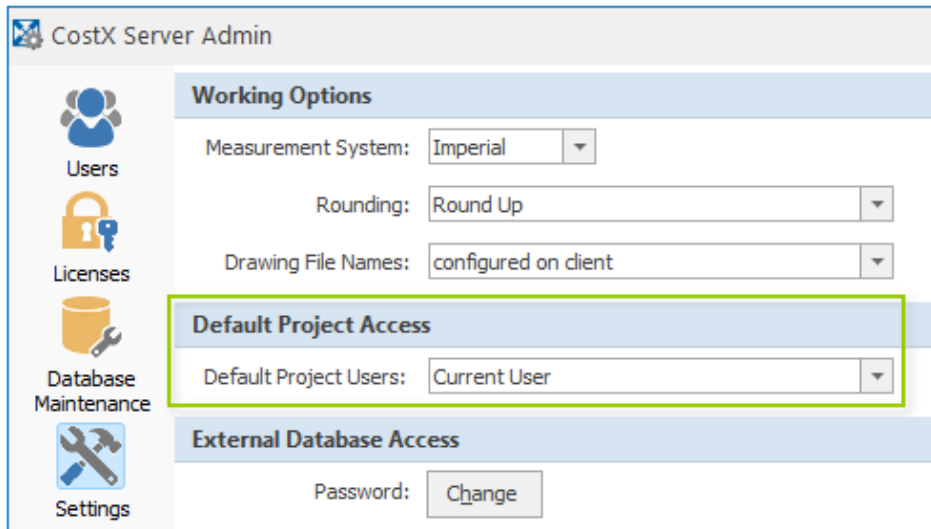
In version 7.1 of CostX® Cloud, the Admin Portal has been updated with the following improvements and new functions:

- Previously it was only possible to convert a **Subscriber** to a **Subscriber/User Admin**. In version 7.1, it is also possible to convert a **User Admin** to a **Subscriber/User Admin**.
- User administrators can now view the list of users who are currently logged into CostX®. They can also log off any of the users if required.
- It is now possible to send a message from CostX® Admin Portal to a user who is currently logged into CostX®. Once sent, the message is displayed immediately on the user's CostX® screen.

 **NOTE:** Detailed information about CostX® Admin Portal can be found in the CostX® Admin Portal User Guide, which is available upon request from Support.

Other

- On the **Settings** page of CostX[®] Server Admin, there is a new **Default Project Access** section which can be used to set whether the default access of a new project is to the current user or everyone.



- The underlying PostgreSQL database of CostX[®] has been upgraded from PostgreSQL 10 to PostgreSQL 14 for improved performance and reliability. Due to the PostgreSQL update:
 - It is not possible to directly upgrade to CostX[®] or CostX[®] Server 7.1 from a version older than 6.9. If you are running version 6.8 or earlier, you must upgrade to version 6.9 or 7.0 first before upgrading to 7.1. This limitation does not apply to CostX[®] Viewer and CostXL.
 - EXF files that were created in a version earlier than CostX[®] 6.0 cannot be imported directly into CostX[®] 7.1. To import a pre-6.0 EXF file, you must first upgrade the file to version 6.x or 7.0 before importing the file. For detailed steps on how to do this, refer to the *Importing CostX Data* topic in CostX[®] Help.
- QV CostBuilder cost data will be available to use in CostX[®] for the NZ market. CostX[®] users will have the ability to licence QV CostBuilder rate libraries directly from RIB, making them available within the software to use directly in estimates and cost plans. More information can be found here: <https://www.itwocostx.com/costx/page/qv-costbuilder/>
- Branding has been amended within the product from “iTwo costX” to “RIB CostX” in line with our global RIB branding, displaying how all products within the RIB portfolio are tied together with the primary purpose of making engineering and construction more efficient and sustainable.
- Previously CostX[®] Server used “Exactal Activation Proxy” as the agent name when making activation requests. This agent name has been changed to “CostX Server”. If you are using a proxy or a perimeter defence system in which a rule has been added to check for this agent name before allowing requests to RIB TechWeb, you’ll need to update the rule.

- Extensive updates for CostX® training materials:
 - The step-by-step instructions and screenshots in all training exercises have been updated in line with the new features and changes in version 7.1.
 - A comprehensive review of the training exercises has been conducted to ensure correct and up-to-date information.
 - A new set of training videos is created for version 7.1.